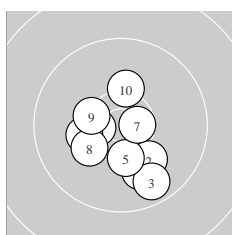
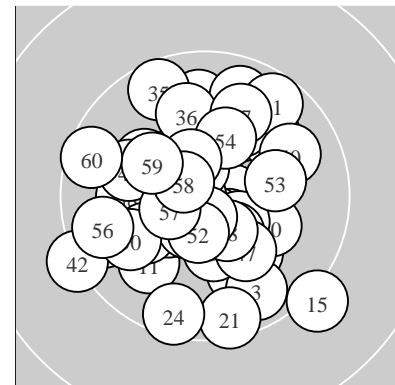
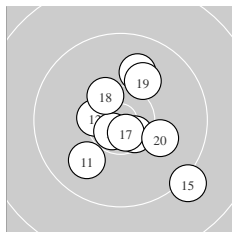


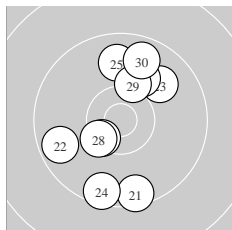
Ergebnis: **585** (609.9)
 Serien: 99 99 94 96 99 98
 Zähler: 45 15 0 0 0 0 0 0 0
 Innenzehner: 23
 weiteste: 1404 (15), 1309 (42), 1136 (21)
 beste Teiler 89.6 (32.) 193.4 (51.) 206.6 (17.)
 Trefferlage 0.79 mm links, 0.07 mm tief
 Streuwert 4.92, horizontal: 4.75, vertikal: 5.09



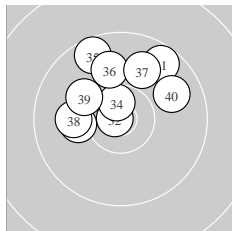
Serie 1:
 10.0 ↘ 10.1 ↘ 9.7 ↘ 10.5 * 10.3 *
 10.2 ← 10.6 * 10.2 ↙ 10.4 * 10.2 ↑
 beste Teiler 254.0 (7.) 355.0 (4.) 465.2 (9.)
 Trefferlage 0.21 mm links, 2.39 mm tief
 Streuwert 4.12, horizontal: 3.97, vertikal: 4.27



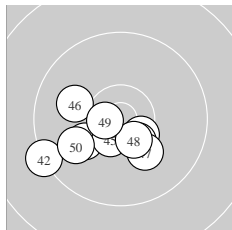
Serie 2:
 10.0 ↗ 10.5 * 10.6 * 10.7 * 9.2 ↘
 10.0 ↑ 10.7 * 10.4 * 10.1 ↗ 10.1 →
 beste Teiler 206.6 (17.) 214.8 (14.) 304.0 (13.)
 Trefferlage 1.25 mm rechts, 0.69 mm tief
 Streuwert 4.96, horizontal: 4.69, vertikal: 5.23



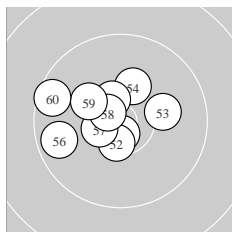
Serie 3:
 9.5 ↓ 9.7 ← 9.9 ↗ 9.6 ↓ 9.9 ↑
 10.5 * 10.1 ↑ 10.4 * 10.2 ↑ 9.7 ↑
 beste Teiler 392.4 (26.) 439.3 (28.) 578.0 (29.)
 Trefferlage 0.22 mm links, 0.38 mm hoch
 Streuwert 6.25, horizontal: 4.43, vertikal: 7.65



Serie 4:
 9.7 ↗ 10.8 * 10.1 ← 10.6 * 9.6 ↖
 10.0 ↑ 9.9 ↑ 10.1 ← 10.1 ↖ 9.9 →
 beste Teiler 89.6 (32.) 259.0 (34.) 646.3 (39.)
 Trefferlage 0.94 mm links, 4.20 mm hoch
 Streuwert 4.58, horizontal: 5.22, vertikal: 3.84



Serie 5:
 10.5 * 9.3 ← 10.4 * 10.2 ↙ 10.5 *
 10.0 ↖ 10.2 ↘ 10.5 * 10.7 * 10.0 ←
 beste Teiler 239.1 (49.) 332.3 (45.) 374.5 (48.)
 Trefferlage 2.33 mm links, 2.80 mm tief
 Streuwert 4.07, horizontal: 5.25, vertikal: 2.36



Serie 6:
 10.7 * 10.5 * 10.1 → 10.3 ↑ 10.5 *
 9.7 ← 10.5 * 10.7 * 10.2 ↖ 9.6 ←
 beste Teiler 193.4 (51.) 234.3 (58.) 337.7 (52.)
 Trefferlage 2.32 mm links, 0.84 mm hoch
 Streuwert 4.13, horizontal: 5.01, vertikal: 3.00

Meyton Elektronik

KK liegend – Wertung – **offene Klasse**

StandNr: 56

Edelmann, Tobias #44261206

StartNr: 3

28. April 2018 11:12

SGes Bockau 1871

Unterschrift des Schützen

Meyton Elektronik